

H-600 HAND WINCH INSTRUCTIONS

READ THESE INSTRUCTIONS CAREFULLY BEFORE ATTEMPTING TO INSTALL, OPERATE OR SERVICE THE WINCH. FAILURE TO COMPLY WITH INSTRUCTIONS MIGHT RESULT IN SERIOUS FATAL INJURY. RETAIN THE INSTRUCTIONS FOR FUTURE REFERENCE.

TECHNICAL SPECIFICATIONS

Rated Load (the first layer of cable on the hub)	272 kg (600 lbs.)
(the last layer of cable on the hub)	61 kg (135 lbs.)
Ratio	3.2 : 1
Hub Diameter	Ø 16 mm
Hub Capacity (cable dia. x length)	Ø 4.76 mm x 11 m (3/16" x 36 ft)
Overall Dimension (length x width x height)	155 mm x 133 mm x 104 mm
Handle	
Length	177 mm
Handle Force required	17 kg
Net Weight	1.3 kg



WINCH MOUNTING

1. This winch is designed to attach to a mounting bracket or structure, which either of them must be capable of withstanding 4 times rated load of the winch.
2. Installing winch at a place should be safe enough to pass-by people, with at least 3 (three) x M8 mm bolts, nuts, flat washers and lock washers to securely fix the winch frame on the mounting structure together (see Fig. 1).

CABLE SELECTION & ATTACHMENT

1. The safety factor of the adopted cable based on the minimum-breaking load shall not be less than 5.
2. Cable should comply with ISO4308-1 (cranes and lifting appliances; selection of wire cable).
3. Thread cable through one hole on the drum plate then wrap the drum, clamp the cable with cable keeper (see Fig. 2), making sure that the bolt head of cable keeper should be at the inside of winch drum. In case of hook application, attach the other end of cable to suitable hook having safety catch, clamp the cable with suitable clip. The breaking strength of the hook must be at least 1.5 times of the breaking strength of the cable.
4. Cable should be directed straight off winch --- not at an angle. This will prevent cable from rubbing against winch to avoid cable damage.

OPERATING

1. All nuts must be securely tightened before operation.
2. Re-lubricate all shafts and gears before first use.
3. A static test with 1.5 times rated load must be conducted for ten minutes before the first use of winch, for sure of smooth operation.
4. Driving with crank handle clockwise could lift load. Make sure the ratchet lever engaged with gear and hold load before winch handle is released. To release load, it must be assured that winch handle is securely gripped and apply force clockwise so that ratchet lever can be disengaged easily from gear, then, carefully turn handle in counter-clockwise direction.
5. The engineered mechanism produces clicking sounds when cranking the winch clockwise to lift load.
6. To lock the load at any desired position, turn crank handle clockwise until at least 2 (two) sounds of clicking is heard before releasing crank slowly. Load will remain locked in any position whenever handle is released.

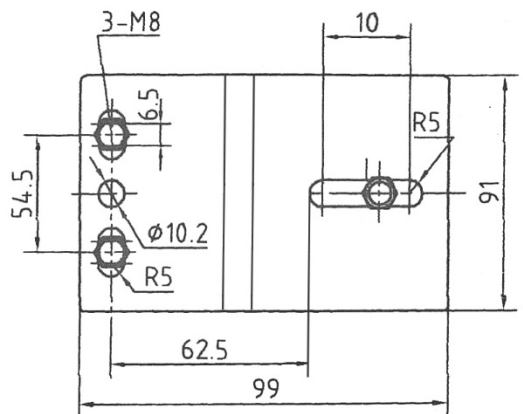


Fig. 1: H-600 Winch Mounting Instruction

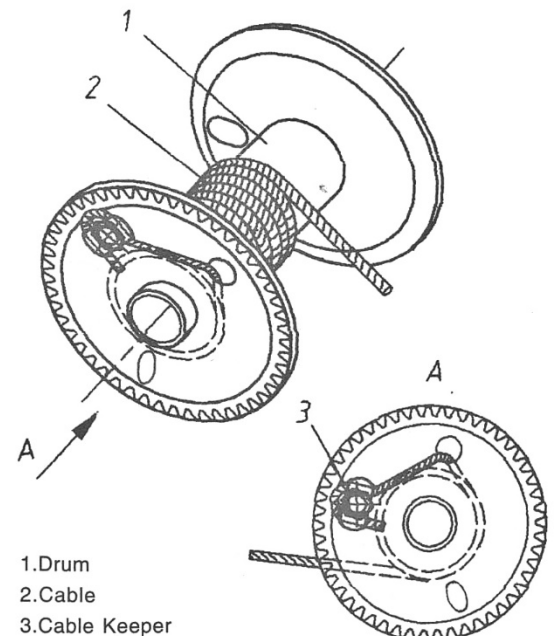


Fig. 2: H-600 Winch Cable Attachment

WARNING

1. Never exceed the rated load capacity of winch. The capacity rating is based on the first layer of cable on the drum. Pulling load should be reduced with more layers built up on the drum. The load for the last layer of cable must be lower than 61 kg. Keep at least three full turns of cable on the drum when the carrying device is at its lowest position. Never fully extend cable when under load.

2. Keep at least 3 (three) full turns of cable on the drum when the carrying device is at its lowest position. Never fully extend cable when under load.
3. Operate with hand power only! Don't drive this hand winch with a motor of any kind. If winch cannot be cranked easily with one hand, the winch might be being overloaded.

INSPECTION & MAINTENANCE

1. Bushings should be lubricated periodically for extended life.
2. After long-time storage, re-lubrication is recommended before use.
3. All moving parts including gears and shafts should be kept clean and lubricated to insure desired smooth operation.
4. Periodically check on the brake mechanism is recommended.

WARNING

1. Do not operate winch when cable is knotted, kinked or shows any signs of unsafe connection.
2. Keep away from load-bearing cables, drums or pulleys during operation.
3. Inspection and maintenance can only be conducted without loading.
4. Care must be taken during re-assembling of the mechanism, making sure that all parts are in the right position.
5. Components can be affected by chemicals, salts and rust and should be examined for safe operation before use.

WARNING !

1. Forbidden to lift, support and transport people or to load over working areas where people could be present.
 2. Overloading could cause damage of equipment or injury of people.
 3. Never put your fingers, clothes or body into engaging area or fitting surface related to cable, gears.
 4. Never exceed the hub capacity of cable.
 5. Never tie a knot on cable.
 6. Never allow children or anyone who is not familiar with the operation of winch, to use it.
 7. Always apply load properly and evenly.
 8. Always keep winch in good working condition. Winch accident could result in personal injury or property damage.
- DO NOT USE A DAMAGED WINCH!**